

# FTP-300

**FTP-300** is a durable solar charged power solution with PoE in a small form factor ideal for Wi-Fi hotspots, surveillance cameras, microwave CPE's, cellular gateways and more.



## About

**FTP-300** is designed for “Deploy & Forget” deployments in remote areas and for operation under harsh environmental conditions.

**FTP-300** is designed for energy efficiency and compatibility with a wide range of solar panels, thus mitigating the emissions and air pollution caused by diesel and coal powered connectivity infrastructure.



Each FTP-300 approximately **saves 175 kg of CO2 emissions per year**, thereby contributing to the achievement of [Sustainable Development Goal 7](#)

## FTP-300 benefits



### Powerful long-lasting battery

FTP-300 can provide up to 60 hours of battery backup to a Wi-Fi access point or be deployed with less battery capacity to minimize cost of batteries. The battery cells may last for up to 10 years.



### Deploy and forget

FTP-300 is designed to work in harsh and remote locations. To conserve battery longevity, FTP-300 turns off when power levels become too low to sustain further usage. When the charge level is back above the threshold, FTP-300 automatically turns on again. No human intervention required.



### Multiple options for power input

The high-grade built-in MPPT means that FTP-300 is perfectly coupled with solar panels. It can also work with AC power with the Fuzion IP-67 outdoor rated AC/DC adapter.



### High power to size ratio

Leveraging Li-ion batteries, FTP-300 delivers an unprecedented amount of power compared to its small size.



### Versatile

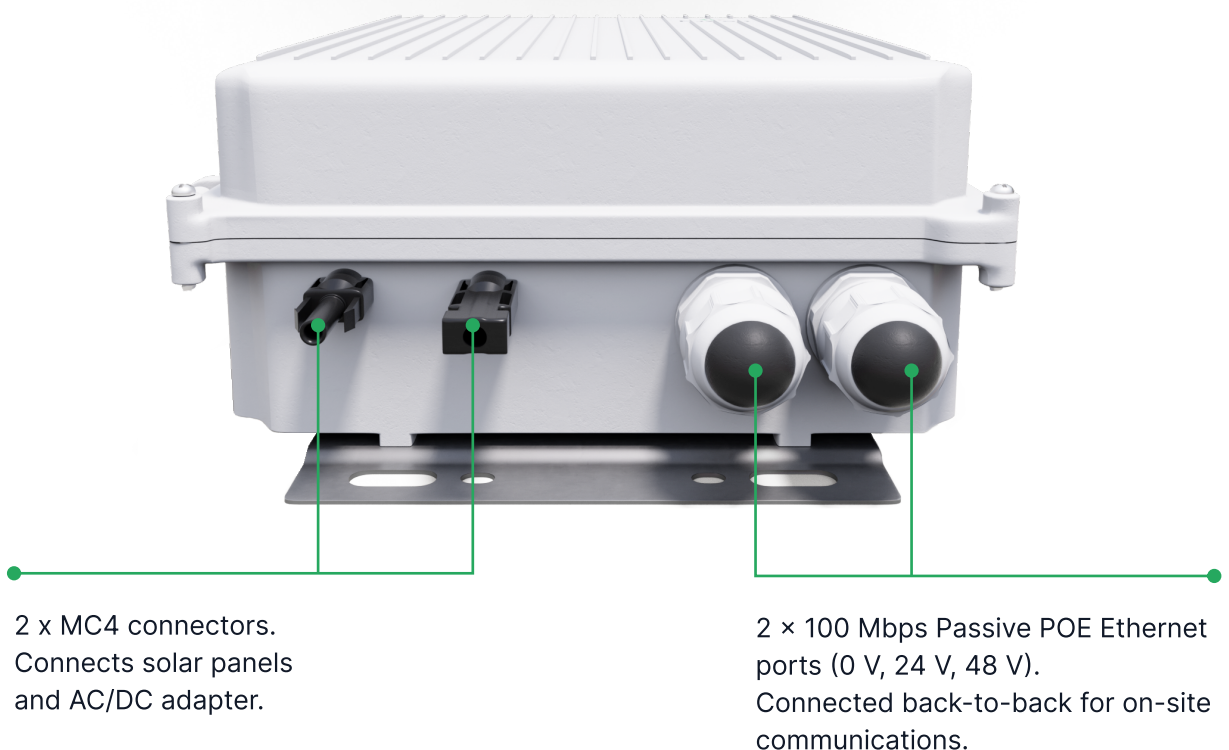
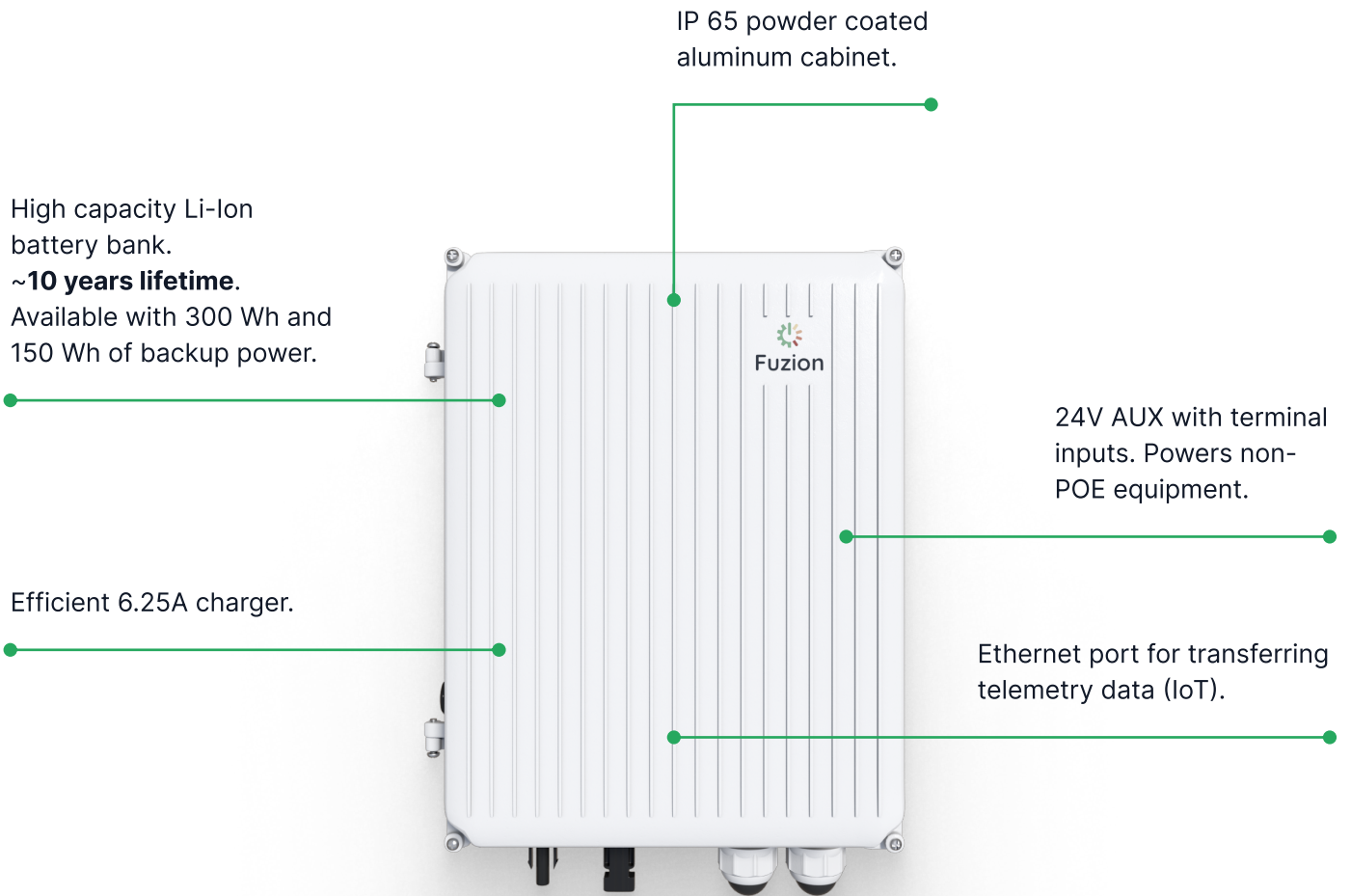
Having a separate DC output and two back-to-back connected data connectors, which individually can be PoE enabled, FTP-300 can be used in multiple applications such as powering wireless access points, surveillance cameras, wireless bridges and repeaters, fiber ONUs, and remote lighting systems.



### Remote power monitoring

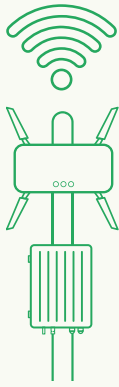
FTP-300 has built-in IoT capabilities including remote monitoring capabilities. The Smart Power feature can be demonstrated and will soon be available on trial mode on request

# FTP-300 – 300Wh Networked Power Unit

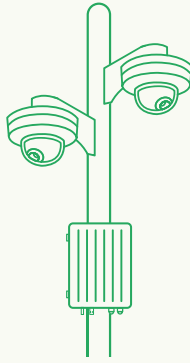


## Common applications

Ideal for Wi-Fi hotspots, surveillance cameras, microwave CPE's, cellular gateways and more. Everything you need for smart city projects.



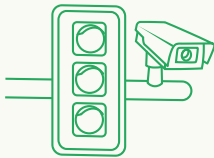
Municipal Wi-Fi



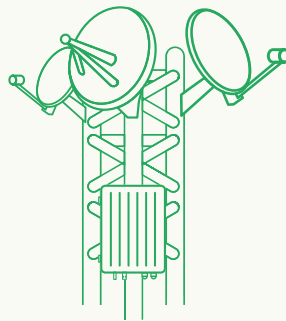
Video surveillance



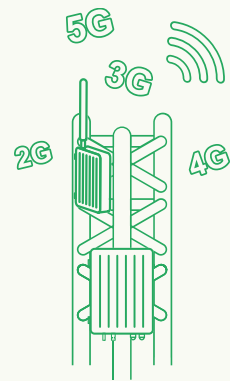
IoT installations



Traffic control



Microwave relay sites



Small mobile base stations

## Sustainable development

Powering networks with Fuzion directly addresses multiple UN Sustainable Development Goals

### **GOAL 7.2**

#### Affordable and clean energy

By 2030, increase substantially the share of renewable energy in the global energy mix.

### **GOAL 9.1**

#### Industry innovation and infrastructure

Develop quality, reliable, sustainable and resilient infrastructure ... to support economic development and human well-being, with a focus on affordable and equitable access for all.

### **GOAL 8**

#### Decent work and economic growth

Promote sustained, inclusive and sustainable economic growth, full and productive employment and decent work for all.

## Technical specifications

NETWORK	
<b>Ethernet ports</b>	<ul style="list-style-type: none"><li>• 2 × 100 Mbps Ethernet, connected back-to-back</li></ul>
POWER	
<b>Input power</b>	<ul style="list-style-type: none"><li>• Voltage: 27 VDC ( max )</li><li>• Current: 6.25 A ( max )</li></ul>
<b>Power sources</b>	<ul style="list-style-type: none"><li>• Solar panels</li><li>• AC / DC adapter ( external accessory )</li></ul>
<b>Output power</b>	<ul style="list-style-type: none"><li>• Total maximum output power (PoE + AUX): 30 Watt</li><li>• 2 × 0/24/48 VDC selectable Passive PoE</li><li>• 48 VDC - Max Power 30W as PSE</li><li>• 24 VDC - Max Power 30W as PSE (15W/port)</li><li>• 1 x AUX + 24 VDC -Max Power 30 W</li></ul>
<b>Output terminals</b>	<ul style="list-style-type: none"><li>• 2 x RJ45 data ports</li><li>• 1 x RJ45 port for IoT (only)</li><li>• 1 x DC cable terminal</li></ul>
<b>Input terminals</b>	<ul style="list-style-type: none"><li>• 2 x MC4 connectors ( male / female )</li></ul>
<b>Solar panel specifications</b>	<ul style="list-style-type: none"><li>• 36 cell panels</li><li>• Minimum Vmp: 18 V</li><li>• Maximum Voc: 27 V</li></ul>
<b>Power usage</b>	<ul style="list-style-type: none"><li>• Controller self-consumption : &lt;0.9 W</li></ul>
GENERAL	
<b>Model number</b>	<ul style="list-style-type: none"><li>• FTP-830-00053</li></ul>
<b>Warranty</b>	<ul style="list-style-type: none"><li>• 3-year hardware warranty</li></ul>
BATTERY	
<b>Type</b>	<ul style="list-style-type: none"><li>• Lithium-ion 18650 cells</li><li>• 3.6V, 3,400 mAh is recommended</li></ul>
<b>Capacity</b>	<ul style="list-style-type: none"><li>• 150Wh / 300Wh, dependent on configuration</li></ul>
<b>Voltage</b>	<ul style="list-style-type: none"><li>• Battery voltage: 11 V nominal</li></ul>
<b>Output terminals</b>	<ul style="list-style-type: none"><li>• 2 x RJ45 data ports</li><li>• 1 x RJ45 port for IoT (only)</li><li>• 1 x DC cable terminal</li></ul>
PHYSICAL	
<b>Mounting</b>	<ul style="list-style-type: none"><li>• Tower, pole, wall</li></ul>
<b>Dimensions</b>	<ul style="list-style-type: none"><li>• Height: 27 cm / 10.6 in</li><li>• Width: 21.4 cm / 8.4 in</li><li>• Depth: 9 cm / 3.5 in</li></ul>
<b>Operating temperature</b>	<ul style="list-style-type: none"><li>• Charging: +0°C to +45°C / +32°F to +113°F</li><li>• Discharging: -20°C to +60°C / -4°F to +140°F</li></ul>
<b>Weight</b>	<ul style="list-style-type: none"><li>• FTP-300 excluding batteries : 2.20 kg / 4.85 lbs</li><li>• FTP-300 with 150 Wh (18 cell) battery configuration: 3.05 kh / 6.72 lbs</li><li>• FTP-300 with 300 Wh (36 cell) battery configuration: 3.90 kg / 8.60 lbs</li></ul>
<b>Box IP-Rating</b>	<ul style="list-style-type: none"><li>• IP65</li></ul>
<b>Material (Box)</b>	<ul style="list-style-type: none"><li>• Die-cast aluminum, stainless steel</li></ul>

## Related accessories

We offer a range of accessories that allows you to install and operate FTP-300 with any supported network equipment in any location.

### Li-Ion 18650 batteries

**Part#:** FTP-740-00018

Lithium-ion 18650 3.6V, 3,400 mAh battery cell. 18 batteries required for 150 Wh configuration. 36 batteries required for 300 Wh configuration.

### AC Power Support

**Part#:** FTP-840-00008

IP67 outdoor rated AC/DC adapter with MC4 connectors for the FTP-300.

### Fuse Pack

**Part#:** FTP-840-00014

Bag of extra fuses for FTP-300.



**OPTACE NETWORKS**

Optace Networks is the authorized regional distributor of Fuzion products and services.

#### Optace Networks Limited

The Citadel, 4th floor  
50 Muthithi Road  
Nairobi, Kenya

#### Optace Networks FZCO

Jafza View 19  
Jebel Ali Free Zone  
Dubai, United Arab Emirates

#### Website

 [optacenetworks.com](https://optacenetworks.com)

#### Contacts

 [sales@optacenetworks.com](mailto:sales@optacenetworks.com) • [info@optacenetworks.ae](mailto:info@optacenetworks.ae)

 +254 743 946 334 • +254 743 946 335



Power your network



[www.fuzion.tech](https://www.fuzion.tech)



Headquarters  
Langebjergvænget 19E  
4000 Roskilde  
Denmark